

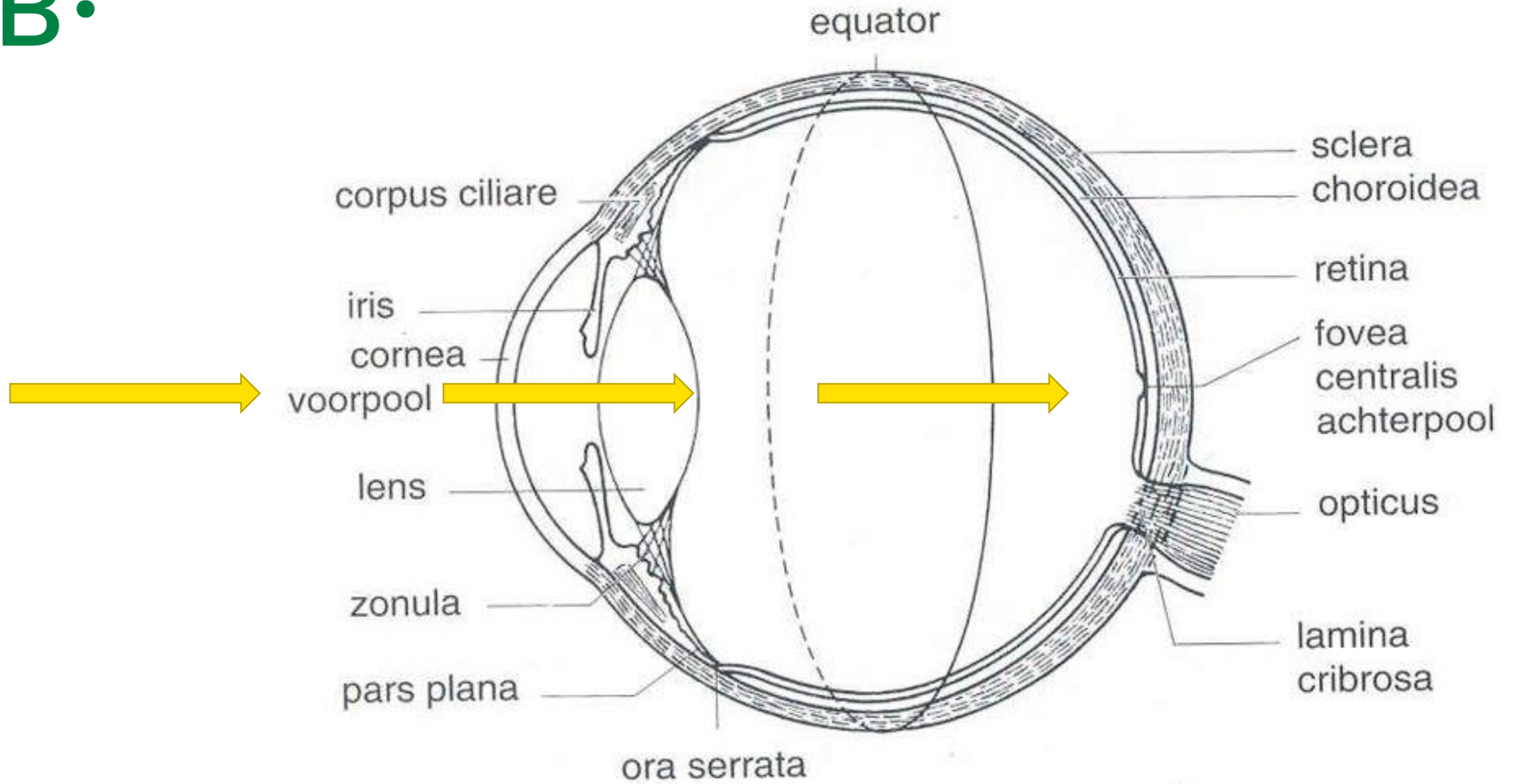
Bartiméus:

Het Licht Zien

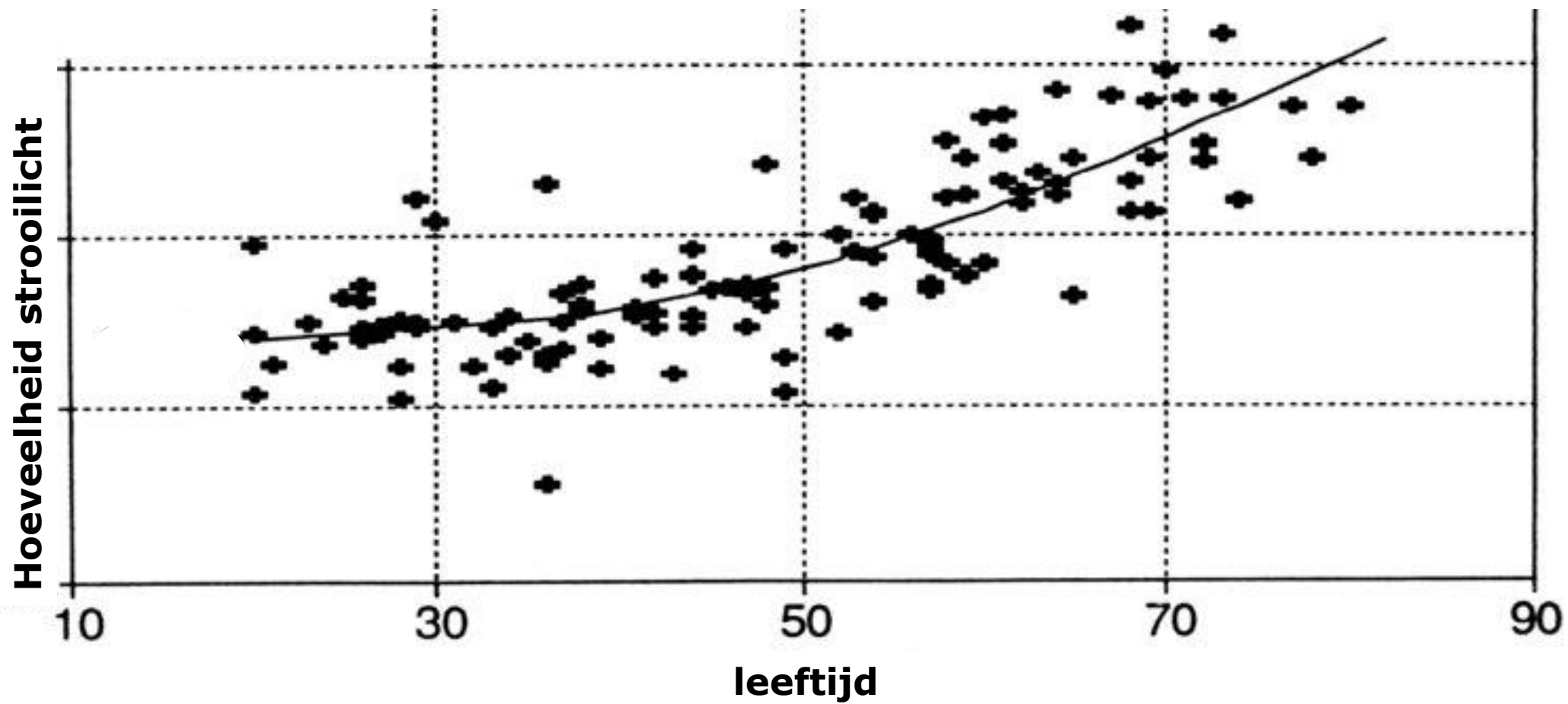
Wim van Damme, klinisch fysicus Bartiméus
Webinar Verlichting en toegankelijkheid
22 oktober 2024



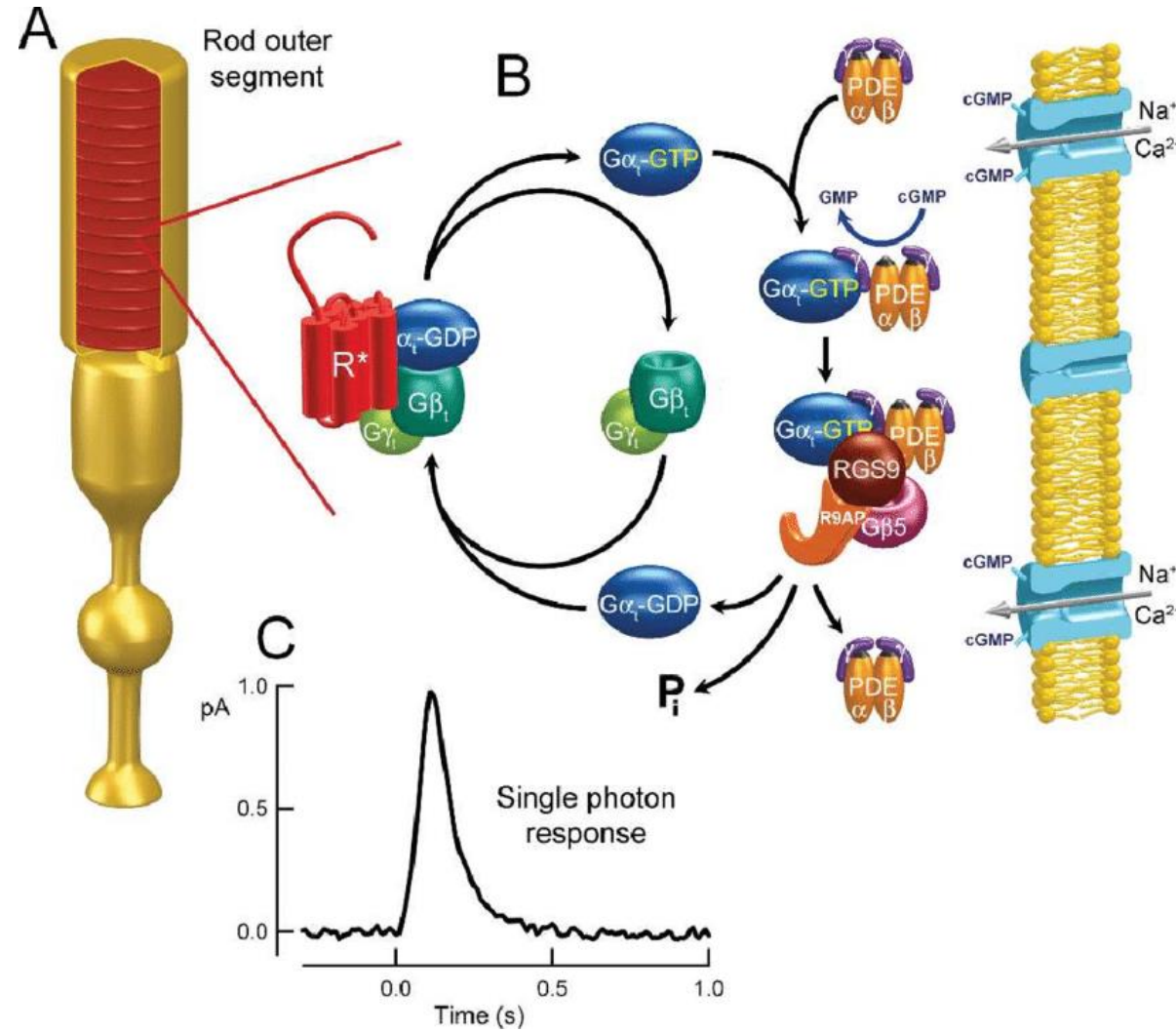
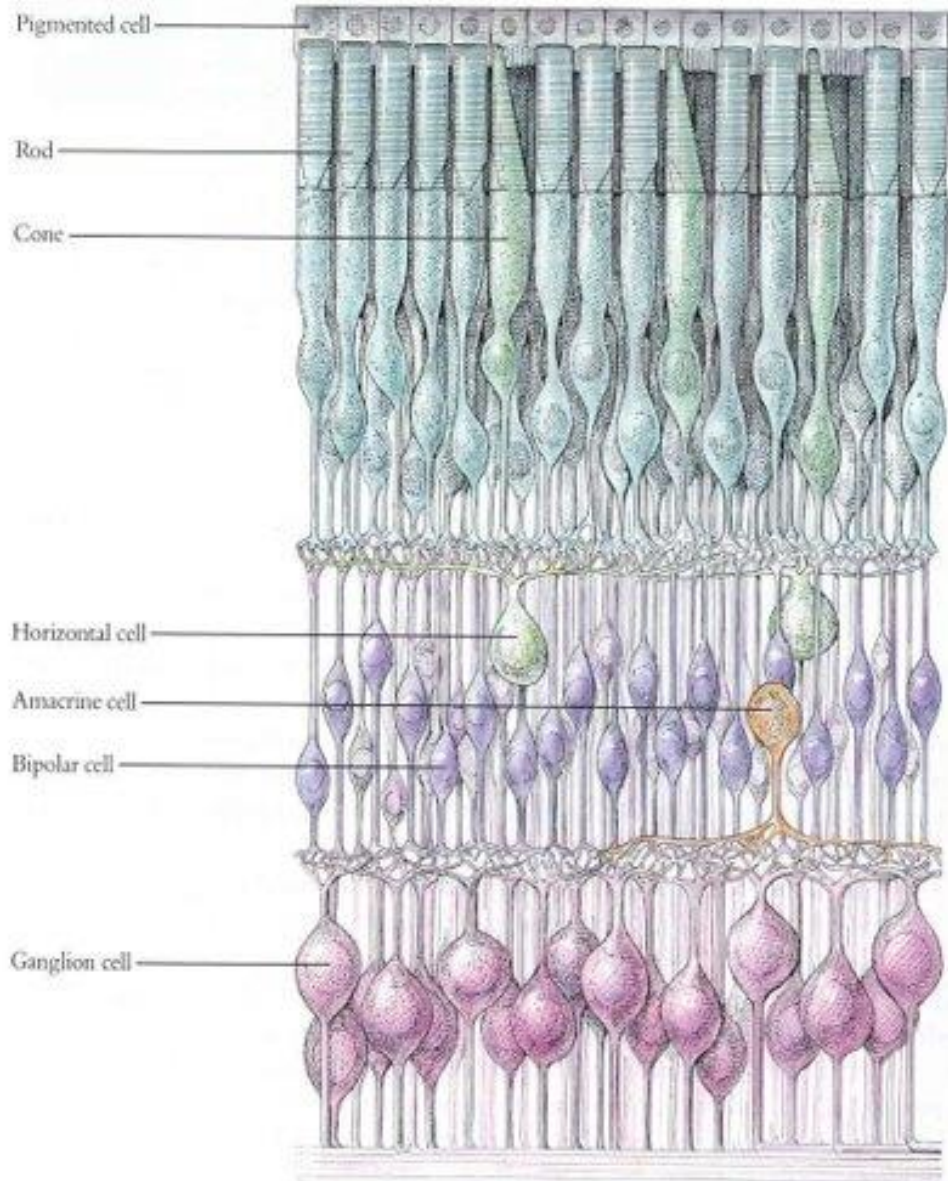
B:





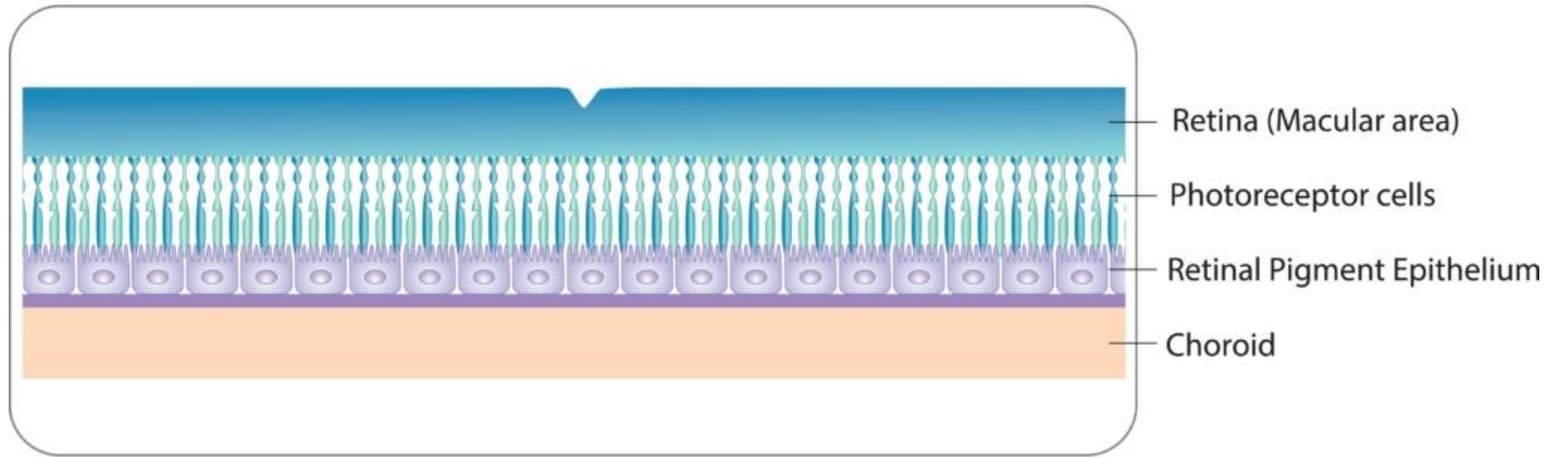


B:

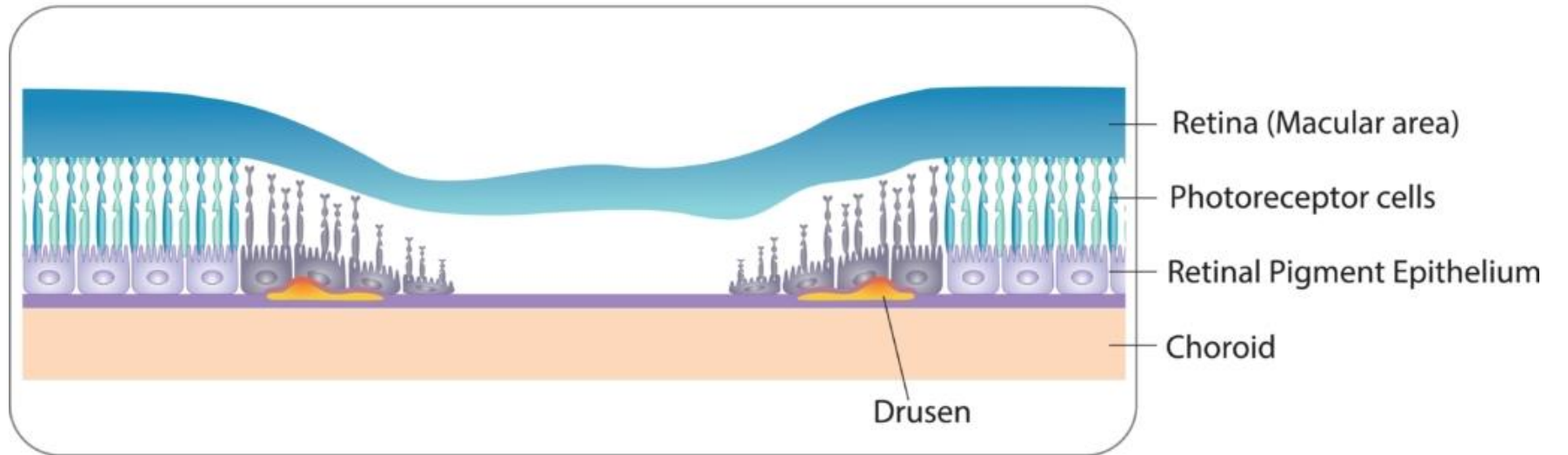


B:

Normal Retina



DRY AMD



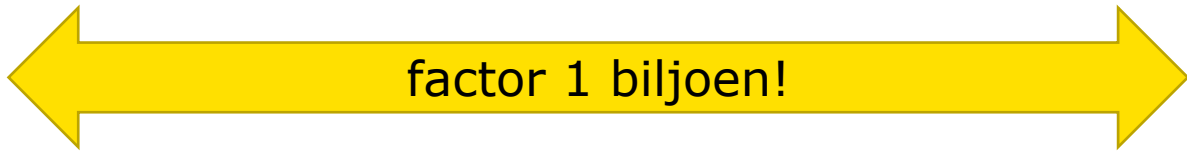
Photoreceptor cells and RPE are damaged and lost by inflammation

B:

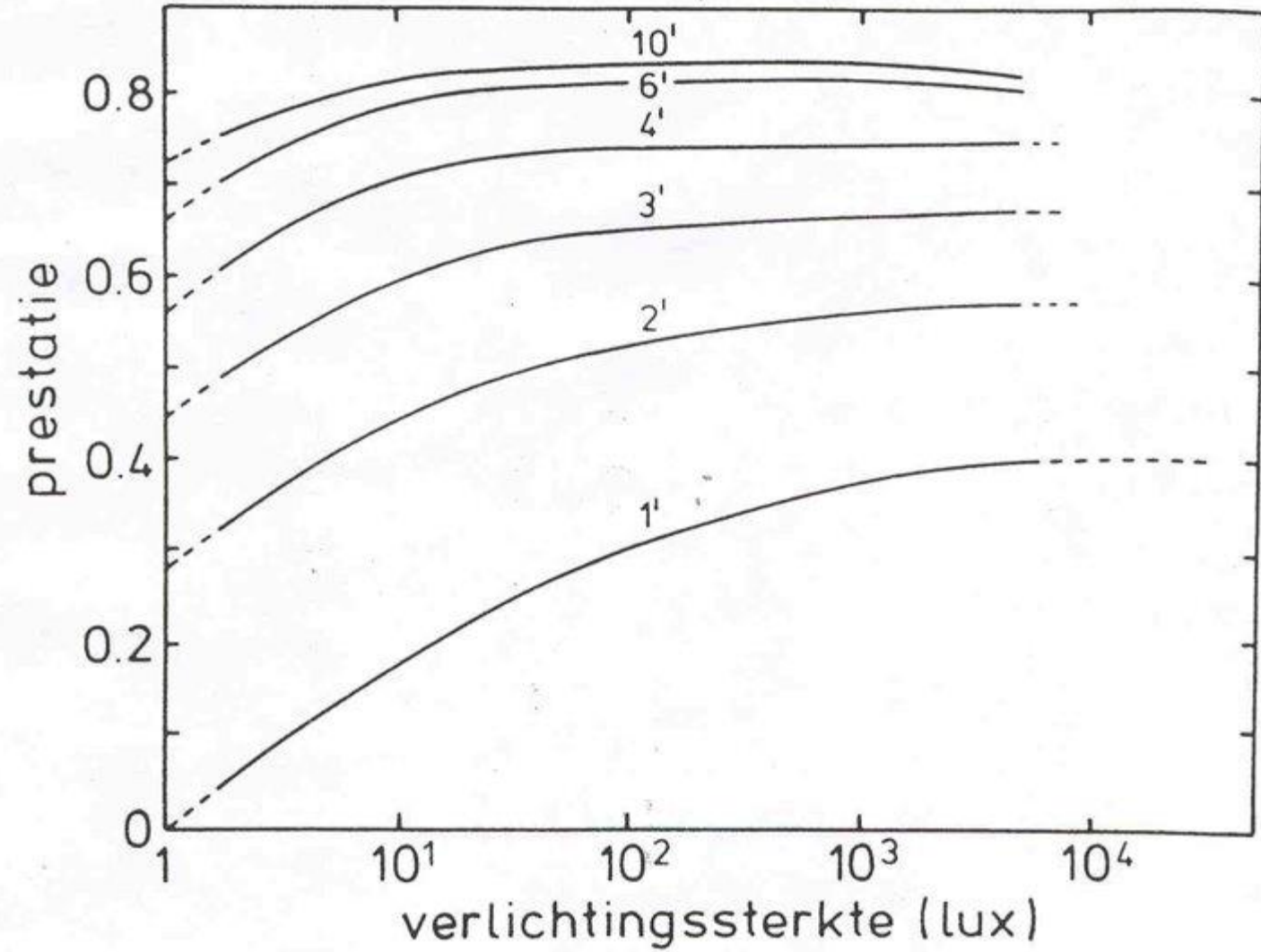
0,0000001 cd/m²

factor 1 biljoen!

100.000 cd/m²



B:



B:

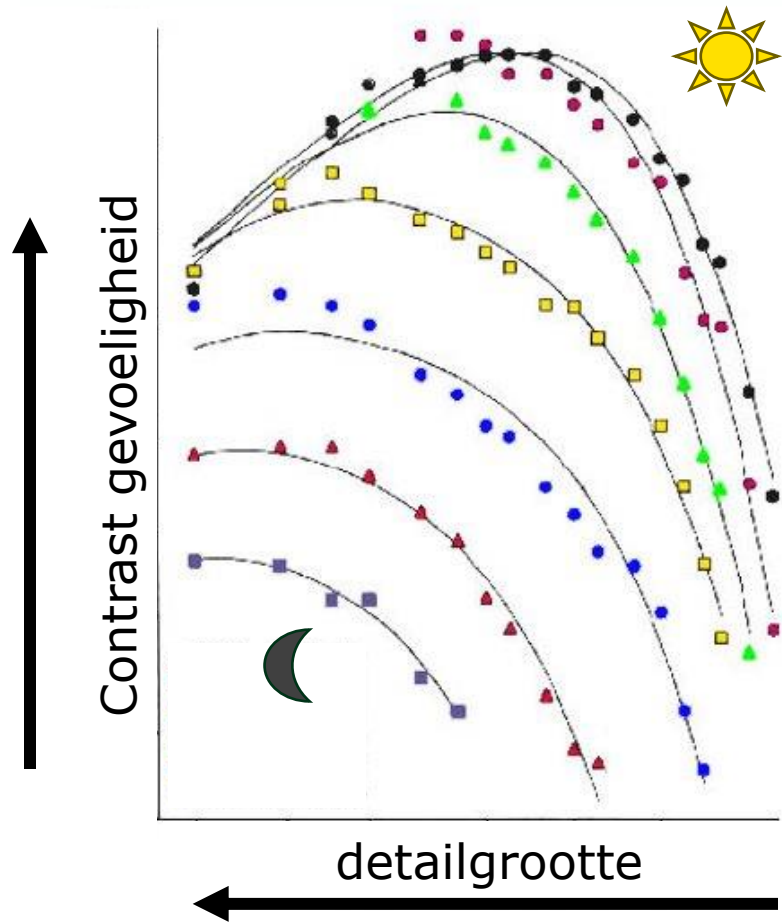
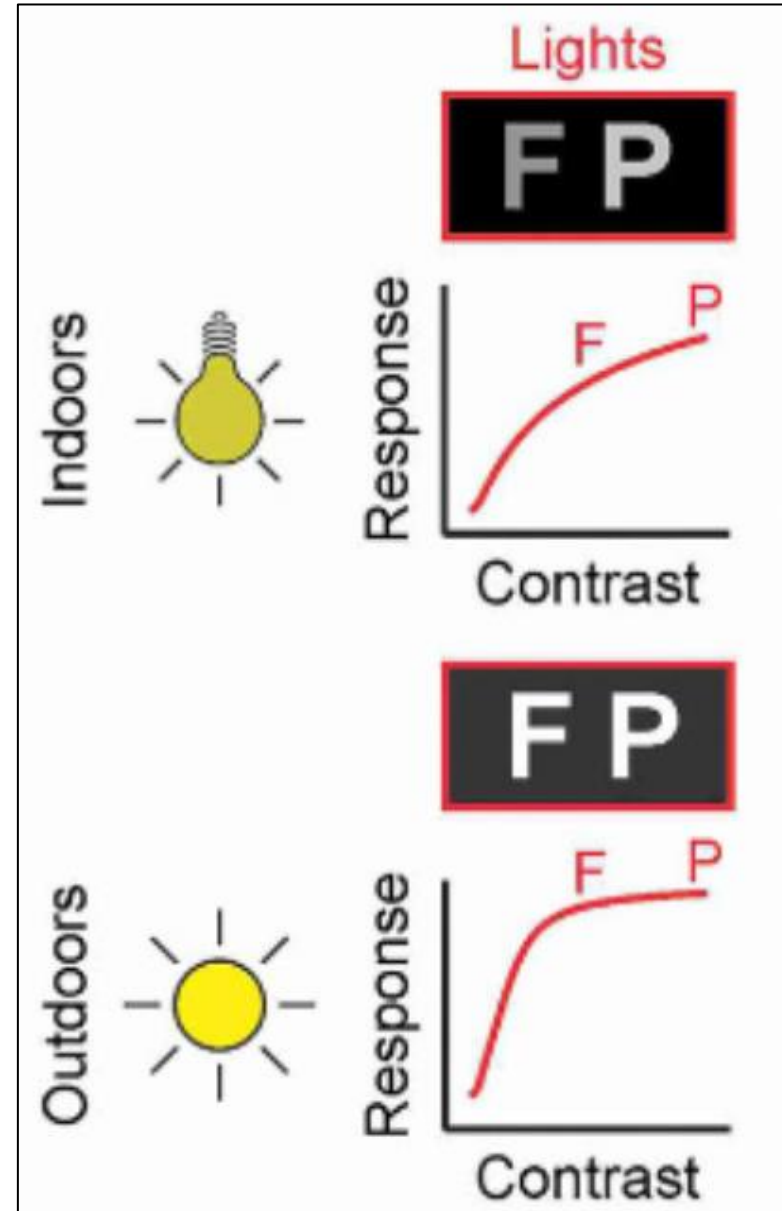


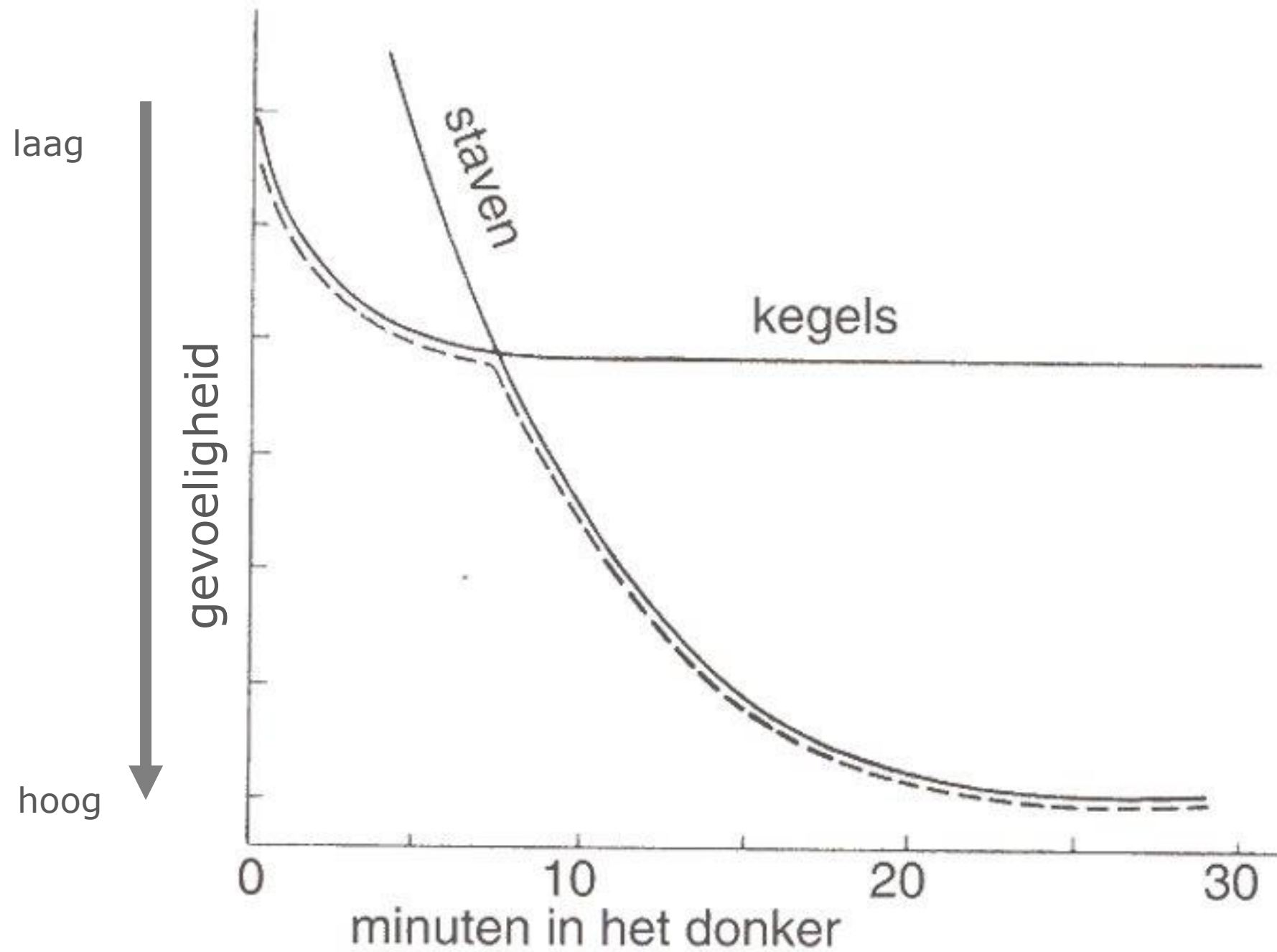
Figure 24. Contrast sensitivity function showing a change in shape from low pass at low luminances and bandpass at high luminances. van Ness' data from Lamming D., Contrast Sensitivity. Chapter 5. In: Cronly-Dillon, J., Vision and Visual Dysfunction, Vol 5. London: Macmillan Press, 1991.



Rahimi-Nasrabadi H e.a. Image luminance changes contrast sensitivity in visual cortex, Cell Rep. 2021 34(5): 1



B:



B:



300.000 slechtziend volgens WHO

Reizen en verplaatsen (70%)

>> "moeite met zien"

3,6 miljoen > 65jr